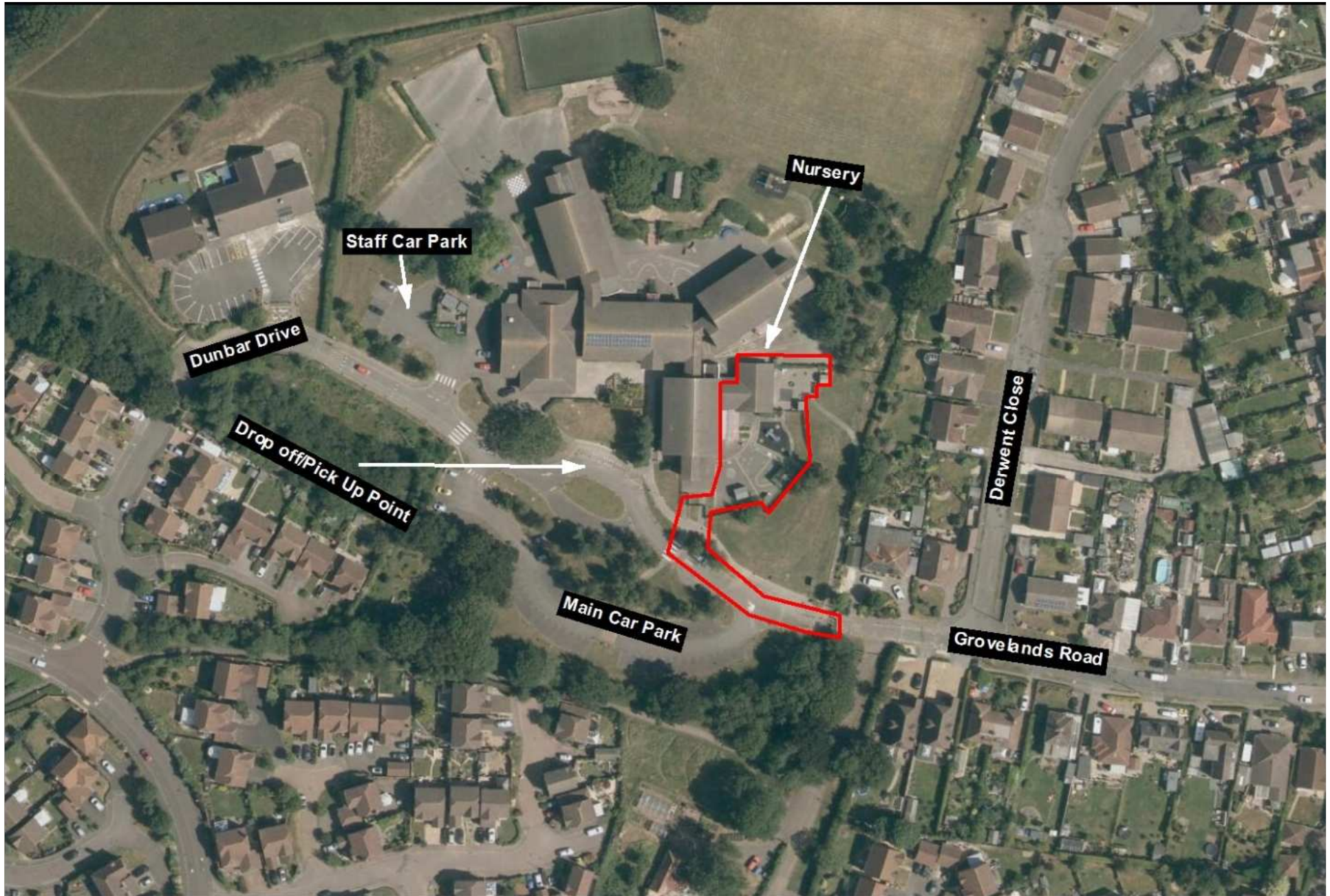


East Sussex County Council Planning Committee 15 November 2017

WD/3376/CC

Grovelands County Primary School, Dunbar Drive, BN27 3UW.

Extension of Nursery School to form additional play room including covered play space and additional WC facilities.



0 25 50 Meters

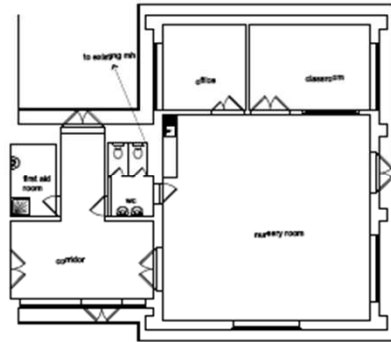
Reproduced from the Ordnance Survey mapping with the permission of the Controller of Her Majesty's Stationery Office © Crown Copyright. Unauthorised reproduction infringes Crown copyright and may lead to prosecution or civil proceedings. East Sussex County Council, 100019601, 2017

Existing and Proposed Floor and Roof Plans

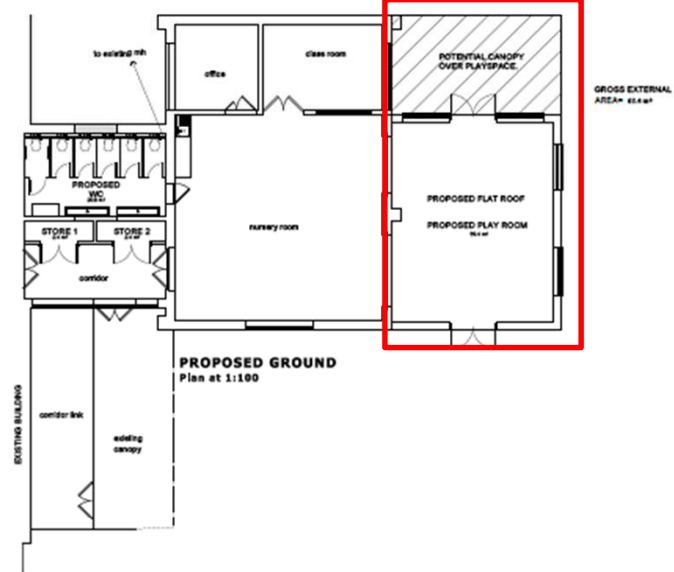


DO NOT SCALE FROM THIS DRAWING EXCEPT FOR PLANNING PURPOSES ONLY.
ALL COMMENTS RELATING TO SUB-CONTRACTOR OR SUPPLIER WORK MUST BE CHECKED ON SITE AND AGreed BETWEEN THE GENERAL CONTRACTOR & THE SUB-CONTRACTOR / SUPPLIER. ALL DIMENSIONS ARE SHOWN UNLESS OTHERWISE STATED.
ALL WORKS OF MATERIAL INDICATED ON THE DRAWING ARE TO BE TO THE LATEST BRITISH STANDARDS AND ARE TO BE CHECKED ON SITE IN ACCORDANCE WITH THE RELEVANT CODES OF PRACTICE OR RECOGNISED TRADE ASSOCIATION REGULATIONS AND A QUALITY ASSURANCE

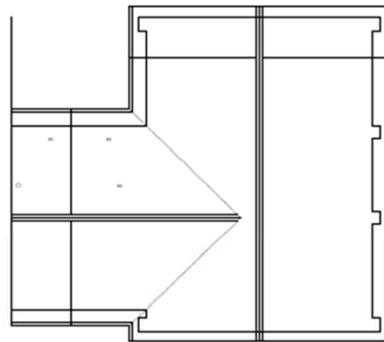
REV.	AMENDMENT	BY	DATE
A	RAMP + INTERNAL WENT AND BEHIND ADDED	MB	16.08.17
B	NEW ROOF REVISION	MB	17.08.17



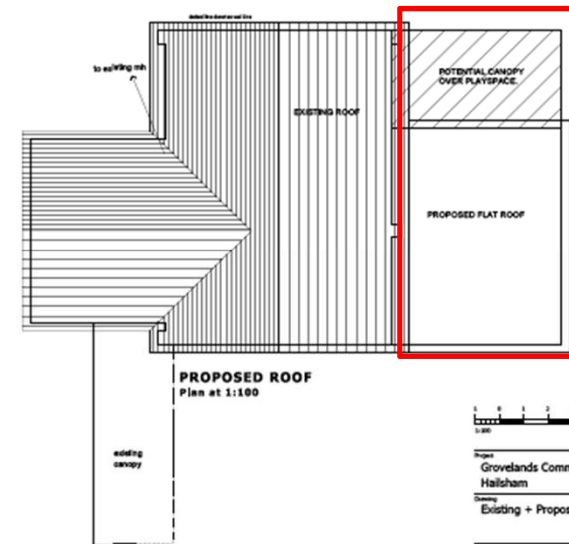
EXISTING GROUND
Plan at 1:100



PROPOSED GROUND
Plan at 1:100

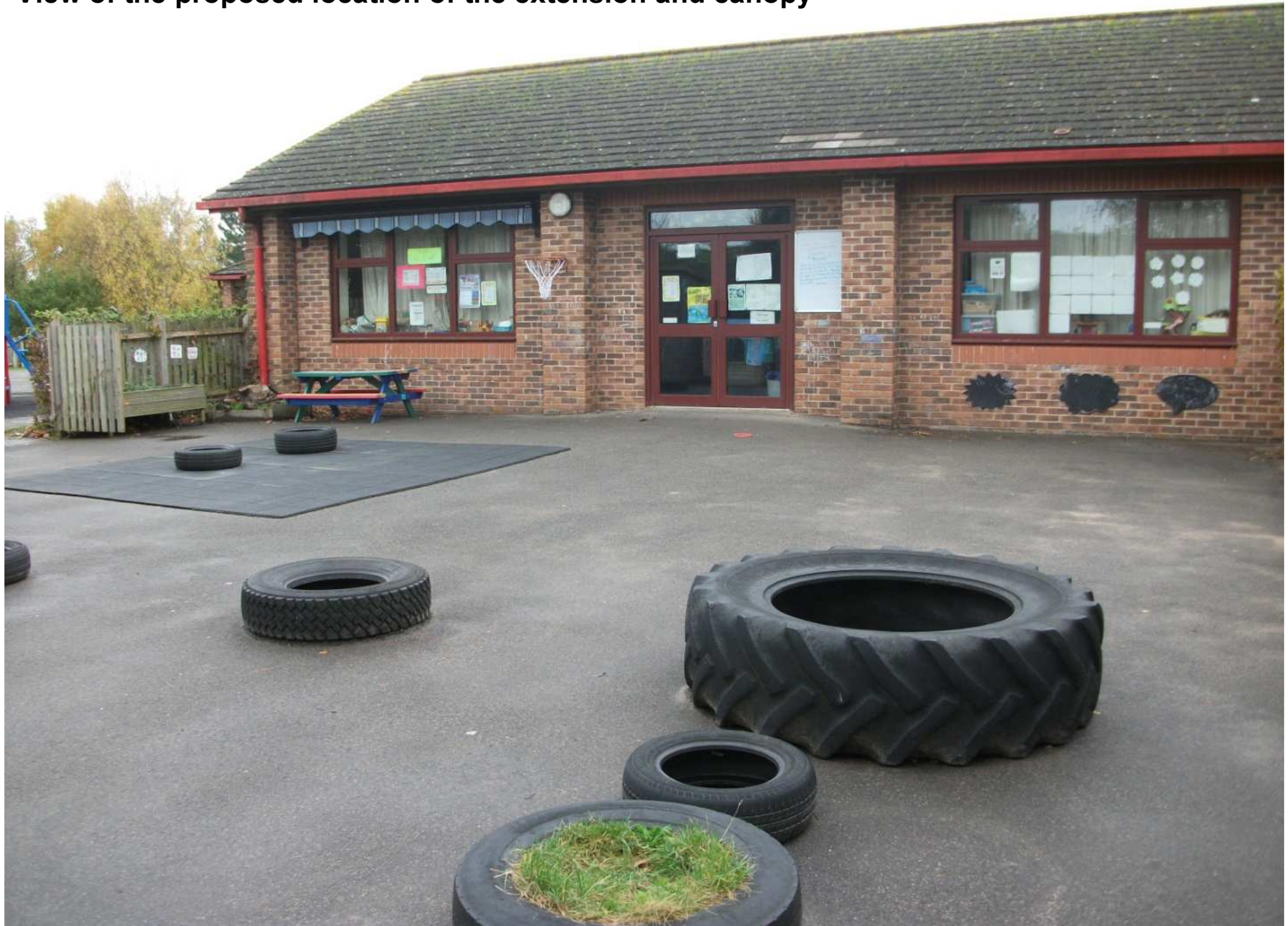


EXISTING ROOF
Plan at 1:100



PROPOSED ROOF
Plan at 1:100









View looking north towards the nursery building from the additional playground

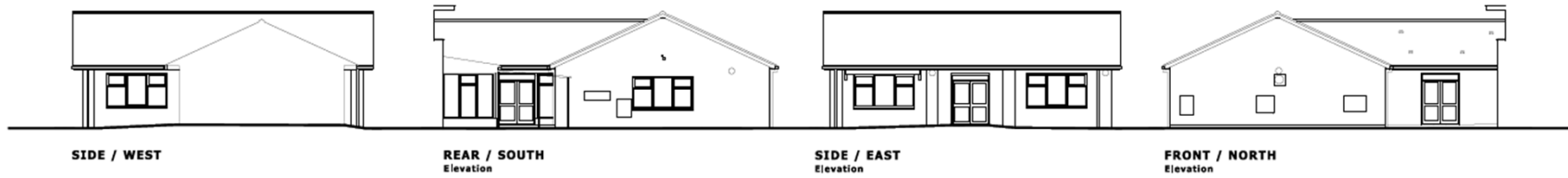


View looking south towards the additional playground and area of the proposed extension

10



EXISTING ELEVATIONS



Project		Grovelands Community School Hailsham		the SEAMAN PARTNERSHIP	
Drawing		Elevations		Ltd	
Date	Drawn by	UNIT 2, MARTINE BARR, BLEDHAM ROAD CHICHESTER, WEST SUSSEX, PO20 7BX			
July 2017	AH	TEL: 01243 514331 FAX: 01243 514488			
Scale	Discipline	office@the-seaman-partnership.co.uk			
1:100 @ A1	Planning	www.the-seaman-partnership.co.uk			
Project No	Discipline	Revision			
TSP 587	PL-04	A			

View of the 'kiss and drop' area looking west towards the Dunbar Drive access



WD/3376/CC

Grovelands County Primary School, Dunbar Drive, BN27 3UW.

Extension of Nursery School to form additional play room including covered play space and additional WC facilities.

East Sussex County Council Planning Committee 15 November 2017